

Controllable Piston diaphragm pumps C409.2 KM



Type	Nominal capacity* l/h QN 50 Hz	Nominal capacity* l/h QN 60 Hz	Nominal stroke* l/h QN 50 Hz	Nominal stroke* l/h QN 60 Hz	max. Counter pressure p <sub>2</sub> max.	max. Suction height	permissible pressure at inlet of pump min./max. bar
	QN bei p <sub>2</sub> max.		QN bei p <sub>2</sub> max./2				
C409.2-7,5 KM	0 - 7,5	0 - 9	0 - 7,5	0 - 9	80 bar	2	-0,2/0
C409.2-10 KM	0 - 10	0-12	0 - 10	0 - 12	80 bar	2	-0,2/0
C409.2-12 KM	0 - 12	0 - 14,4	0 - 12	0 - 14,4	70 bar	2	-0,2/0
C409.2-18 KM	0 - 18	0 - 21	0 - 18	0 - 21	50 bar	2	-0,2/0
C409.2-30 KM	0 - 30	0 - 36	0 - 30	0 - 36	35 bar	3	-0,3/0
C409.2-45 KM	0 - 45	0 - 54	0 - 45	0 - 54	25 bar	3	-0,3/0
C409.2-70 KM	0 - 70	0 - 84	0 - 70	0 - 84	20 bar	3	-0,3/0
C409.2-95 KM	0 - 95	0 - 114	0 - 95	0 - 114	16 bar	3	-0,3/0
C409.2-135 KM	0 - 135	0 - 162	0 - 135	0 - 162	10 bar	3	-0,3/0
C409.2-190 KM	0 - 190	—	0 - 190	—	8 bar	3	-0,3/0

Type	Inlet/Outlet nominal width DN	Nominal stroke frequency 50 Hz	Nominal stroke frequency 60 Hz	max. stroke length mm	Conveying capacity per Hub ml/Hub	Motor output kW	Weight** ca. kg
		min-1	min-1				
C409.2-7,5 KM	10	100	120	10	1,25	0,37	16,5
C409.2-10 KM	10	150	180	10	1,1	0,37	16,5
C409.2-12 KM	10	100	120	10	2,0	0,37	16,5
C409.2-18 KM	10	150	180	10	2,0	0,37	16,5
C409.2-30 KM	10	100	120	10	5	0,37	19,2
C409.2-45 KM	10	150	180	10	5	0,37	19,2
C409.2-70 KM	15	100	120	10	11,6	0,37	19,2
C409.2-95 KM	15	150	180	10	10,6	0,37	19,2
C409.2-135 KM	15	100	120	10	22,5	0,37	19,2
C409.2-190 KM	15	150	180	10	21,1	0,37	19,2

\* Linearity acc. to TA-102

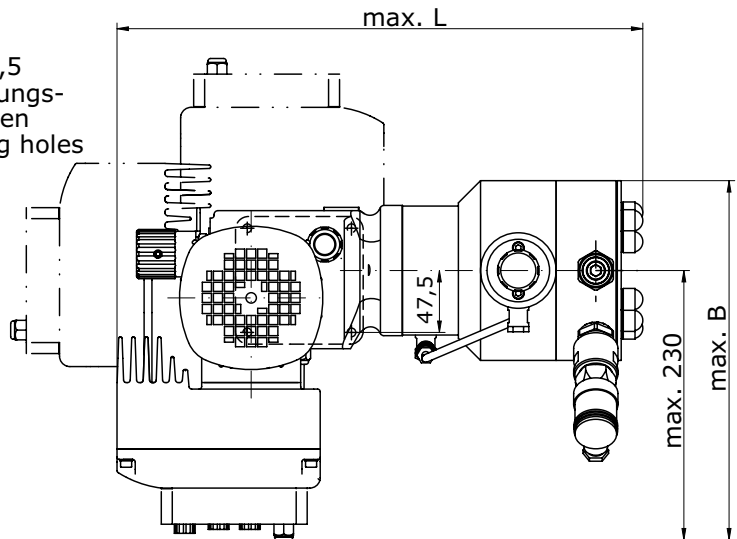
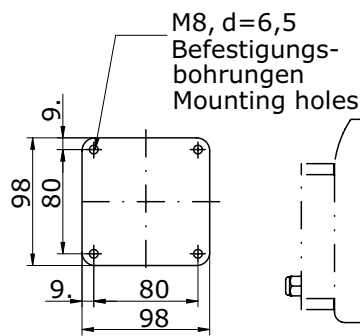
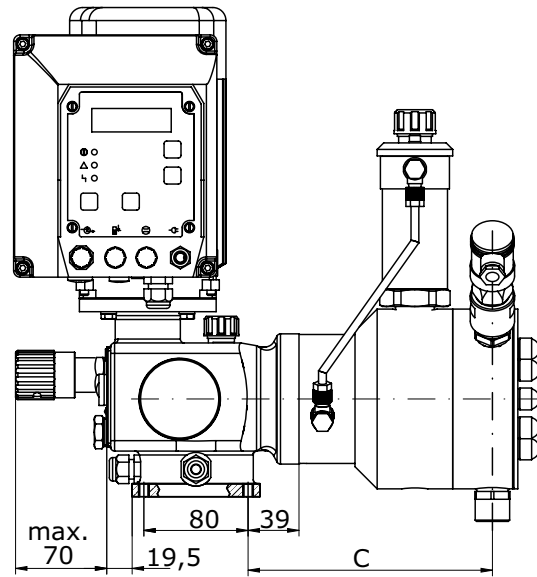
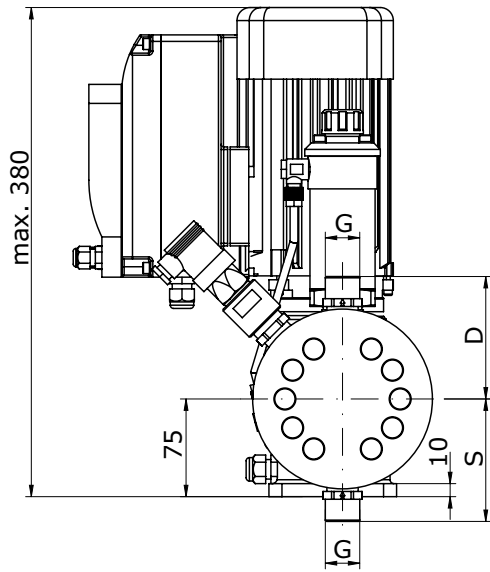
\*\*Standard execution

Pump body and valves by plastic only up to max. 10 bar (p<sub>2max</sub>) usable.

Motor data

Pump type	Motor output kW	Frequency Hz	230 V, 50/60 Hz		115 V, 50/60 Hz		Isolation class ISO	Protection class IP
			Voltage V	Nominal current A	Voltage V	Nominal current A		
C409.2 - ... KM	0,37	50 / 60	210 - 250	3,0	100 - 125	6,0	F	55

# Dimensions C409.2 KM



Drive with control unit; rotatable by 90°

Dimensions in mm	G		S				D			C	L	B		
Type	Connecting thread suction-/ pressure valve	Single valves PVC	Single valves -FRP PK (PP-FRP / PVDF-FRP)	Double valves -FRP PK (PP-FRP / PVDF-FRP)	Double valves 1.4571 / 1.4581	Chamber valves PVC	Single valves PVC	Single valves -FRP PK (PP-FRP / PVDF-FRP)	Double valves -FRP PK (PP-FRP / PVDF-FRP)	Double valves 1.4571 / 1.4581	Chamber valves PVC	Distance mounting flange to valve center	Total length max.	Width max.
C409.2 - 7,5 KM C409.2 - 10 KM C409.2 - 12 KM C409.2 - 18 KM	G 3/4	-	-	83	84	88	-	-	83	84	88	134	360	264
C409.2 - 30 KM C409.2 - 45 KM	G 3/4	97	-	83	95	-	104	-	83	95	-	188	414	276
C409.2 - 70 KM C409.2 - 95 KM C409.2 - 130 KM C409.2 - 190 KM	G 3/4	97	83	-	95	-	104	83	-	95	-	188	414	276