

## INDUSTRIES SERVED

*Refinery*  
*Chemical and Petrochemical Industry*  
*Industrial Refrigeration*  
*Liquefied Petroleum Gas Plants*  
*Galvanizing Industry*  
*Pharmaceutical Industry*  
*Food Industry*  
*Research Centers*  
*Nuclear Plants*  
*Electronic*  
*Offshore Platform*



Manufactured by:

For more information please contact:



A unit of  
**Mischiatti**  
GROUP

**M PUMPS s.r.l.** - Via dell'Artigianato, 120  
45015 Corbola (Ro) - Italy - [www.mpumps.it](http://www.mpumps.it)  
Tel. +39 0426 346304 - Fax +39 0426 349126

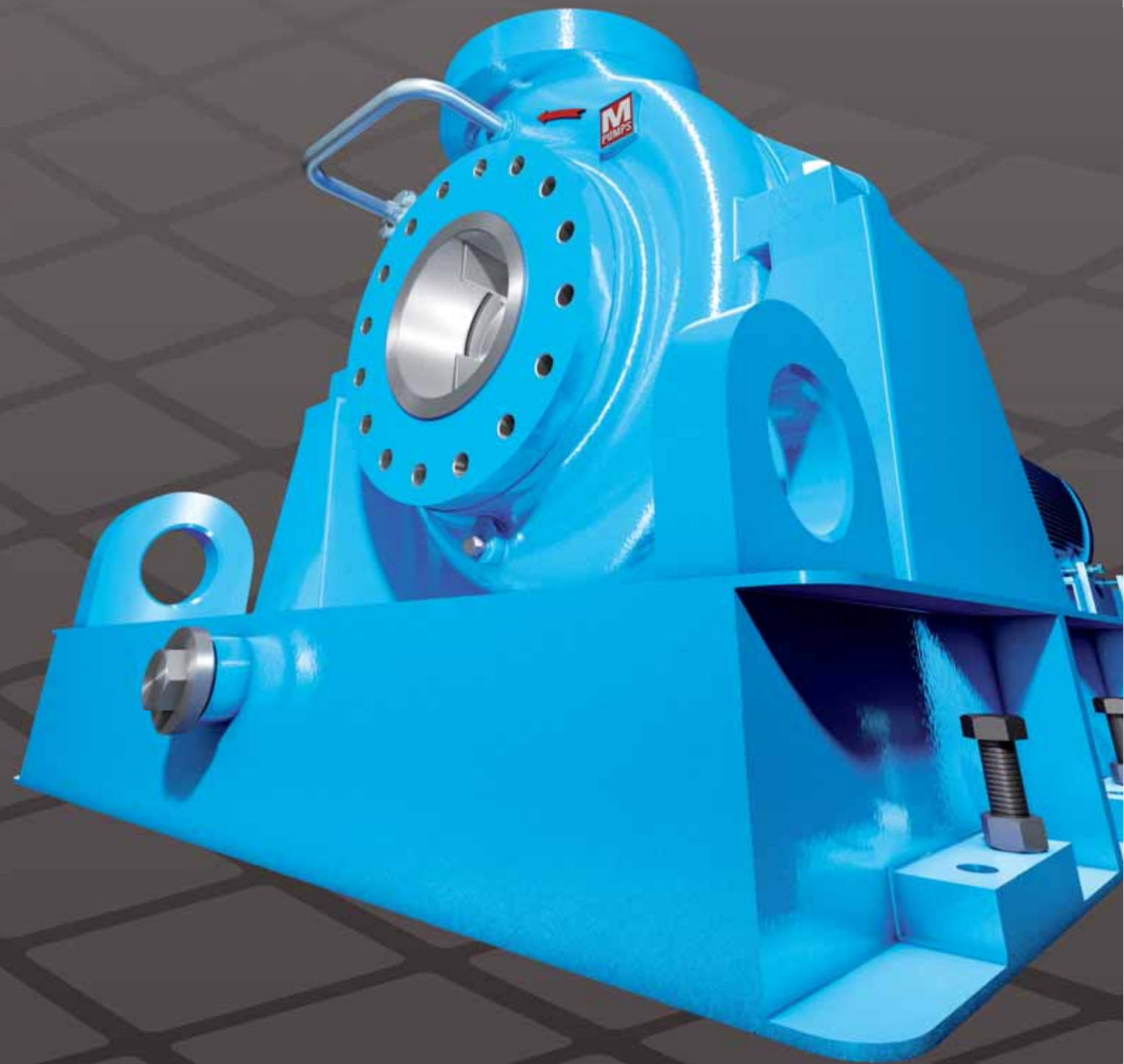


POLIGONO AURRERA, PABELLON 7 BIS, MODULO Nº 3  
48510 TRAPAGARAN (VIZCAYA)  
TELF. 944 723 104\* - FAX 944 955 594



Printed on 06-12-2012

# PRODUCT OVERVIEW



*Setting Innovative Standards*





M PUMPS HEADQUARTER  
CORBOLA - ITALY

What you get from M PUMPS: 21st century design, materials and engineering technology.

Since its foundation M PUMPS has specialized in the application, engineering and distribution of technically advanced, hermetically sealed pumping systems. Industries worldwide have found an extensive program to serve their needs.



All pumps manufactured by M PUMPS are designed in full accordance with current legislation.

ISO 9001/2008 certification ensures compliance with highest quality standards.

ISO 14001-2004 certification proves M PUMPS absolute care to the environment.

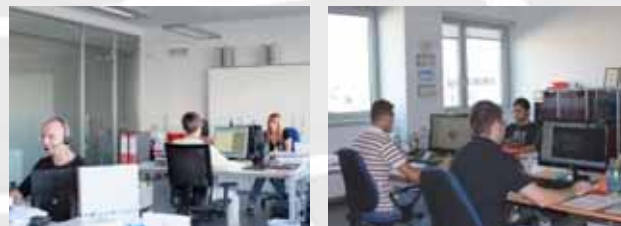


#### Worldwide comprehensive service.

M PUMPS units are serviced through an international network of well trained stocking distributors providing engineering, application assistance, systems design and in-the-field troubleshooting.



M PUMPS sealless Mag-Drive pumps are now available in 26 designs with over 350 basic models. This wide range of pumps allows our engineering department to meet your exact process requirements.



#### OFFSHORE PLATFORM

M PUMPS units are used as Booster and circulation pumps for hydrocarbons, water, liquid gas, crude oil, cooling systems.

Comprehensive Pump's range to cover many applications in refinery and petrochemical plants.



#### REFINERY AND PETROCHEMICAL PLANTS



#### RESEARCH

M PUMPS is the exclusive supplier for important research departments, for thermoregulation systems and sampling for the process analyzers, alcohols circulation in column, glycol water/kerosene, solvents and reagents.

Pumping of heat transfer fluids, difficult to seal liquids, aggressive, explosive and toxic liquids, acids, lyes, ultra pure liquids.

#### CHEMICAL INDUSTRY



#### PHARMACEUTICAL INDUSTRY

Pumping of insuline, acetone, isobutyl alcohol Hcl, sodium hydroxide, pure water, deionized water, and demi-water, methanol, ethanol.

Low NPSH pumps are used in cooling and refrigeration for industrial systems. Pumping of ammonia, silicone oil, ethilen glycol, diatermic oil.

#### REFRIGERATION AND THERMOREGULATION



#### NUCLEAR PLANTS

Pressurization of D2O in the main circuit of the reactors, Pumping of oxalic acid, demi-water at 300°C, Hcl, nuclear fuel, heavy water and various radioactive liquids.



## SPECIAL PUMPS



**CHN MAG-M**  
Acc. To API 685 2nd ed.  
Flow up to 2500 mc/h  
Head up to 220 m  
High system pressure centrifugal pumps



**CN MAG-M**  
Acc. To API 685 2nd ed.  
Special constructions for dirty liquids, high temperatures and pressure  
Flow up to 4000 mc/h  
Head up to 220 m  
INCOLOY® 825, HASTELLOY® C276, TITANIUM ALLOY



**CN MAG-M SPECIAL CONSTRUCTION**  
Special constructions for cryogenic applications



**T MAG-XPM**  
Flow up to 12 mc/h  
Head up to 164 m system pressure up to 1500 bar



**T MAG-M SPECIAL CONSTRUCTION**  
Flow up to 10 mc/h  
Head up to 500 m  
INCOLOY® 825, HASTELLOY® C276, TITANIUM ALLOY



**T MAG-M JACKET**  
Flow up to 10 mc/h  
Head up to 500 m  
Special construction



**T MAG-M HT**  
HT construction for temperature up to 660°F/350°C

## OPTIONS



**PT 100 DEVICES**  
For temperature monitoring of rear casing



**Dry running protector and cavitation detector sensor free**  
For a complete protection of every units



**CT MAG-M**  
Acc. to API 685  
Special version with mechanical speed multiplier for speed up to 4500 RPM



**CN MAG-M**  
Acc. to API 685  
Execution of special arrangement for dirty or clean pumpage  
Acc. To API 685



**CN SEAL-M**  
Acc. to API 610  
Execution of special arrangement for dirty or clean pumpage  
Acc. To API 610



**ATEX AND GOST CERTIFICATION**  
Available for all models



## CENTRIFUGAL PUMPS

For all pumping problems from the simplest to the hardest. Transfer, unloading, circulation...  
High efficiency, long life and low cost maintenance. Hermetically sealed as there are no mechanical seals. Modular construction, quick and simple maintenance.  
Flow up to 4000 mc/h  
Head up to 1300 m  
Pressure from vacuum up to 1500 bar  
Temperature from -150°C up to +450°C  
No heat exchanger required up to +350°C



## PERIPHERAL REGENERATIVE TURBINE PUMPS

Low to medium flows, pulsation free, systems where high pressure is required. Very simple pump for medium and high pressure, used for low flow and high head duty where the traditional centrifugal pumps are not suitable. Very often this type of hydraulic can be used instead of a multistage pump. Ideal pump for long distances or high head.  
Flow up to 10 mc/h  
Head up to 1000 m  
Pressure from vacuum up to 1500 bar  
Temperature from -150°C up to +450°C  
No heat exchanger required up to +350°C



## VOLUMETRIC SLIDING VANE PUMPS

Pulsation free Dosing, injection and small transfer, no wetted self priming up to 4 m. A very simple cartridge exchange, at low cost, allows increase or decrease the performances if required. The only wearing parts on this type of machine is the internal equipment.  
Flow: 1° Range from 50 l/h up to 400 l/h  
2° Range from 500 l/h up to 1000 l/h  
3° Range from 1500 l/h up to 3000 l/h  
Discharge pressure up to 48 bar  
Temperature from -100°C up to +250°C



## GEAR PUMPS

Wide range from small pumps for mechanical seals flushing to big chemical process units. Heavy duty construction for viscosity up to 25000 cst.  
Flow from 0,05 to 80 mc/h  
Discharge pressure up to 30 bar  
Temperature from -100°C up to +200°C



## HOLLOW DISC PUMPS

Heavy Duty, selfpriming, reversible pumps. Low speed, ensure reliability and low noise level. No stripping or vortexing problems, high viscosity medium over 10000 cSt.  
Flow from 0,5 to 38 mc/h  
Discharge pressure up to 8 bar  
Temperature from -50°C up to +200°C



## SIDE CHANNEL PUMPS

From low to medium flows. Best choice for truck unloading and natural gas handling. Self priming up to 5 m. Low NPSHr 0,5m.  
Flow up to 35 mc/h  
Delivery Head up to 360 m  
System pressure up to 50 bar  
Temperature from -90°C up to +250°C



## METALLIC PUMPS



**CN MAG-MS SERIES**  
Acc. to API 685 2nd ed.  
Flow up to 300 mc/h  
Head up to 700 m



**CR MAG-M API SERIES**  
Acc. to API 685 2nd ed.  
Flow up to 4000 mc/h  
Head up to 220 m  
For solid handling capability



**CN MAG-M API SERIES**  
Acc. to API 685 2nd ed.  
Flow up to 4000 mc/h  
Head up to 220 m



**CN MAG-M SERIES**  
Acc. to DIN EN 22858  
CC Version  
Flow up to 250 mc/h  
Head up to 145 m



**CN MAG-M SERIES**  
Acc. to ANSI B 73.3  
Flow up to 4000 mc/h  
Head up to 220 m



**CN MAG-M SERIES**  
Acc. to DIN EN 22858  
BF VERSION  
Flow up to 4000 mc/h  
Head up to 220 m



**CN SEAL-M SERIES**  
Acc. to API 610 11th ed.  
Flow up to 4000 mc/h  
Head up to 220 m



**WA MAG-M SERIES**  
Acc. to API 685 2nd ed.  
Flow up to 100 mc/h  
Head up to 80 m



**CM MAG-M SERIES**  
Flow up to 35 mc/h  
Head up to 36 m



**CT MAG-M SERIES**  
Flow up to 12 mc/h  
Head up to 164 m  
NPSH up to 0,5 m



**CT MAG-MS SERIES**  
Flow up to 12 mc/h  
Head up to 1000 m  
NPSH up to 0,5 m



**T MAG-M SERIES**  
Flow up to 9 mc/h  
Head up to 90 m



**CV MAG-M SERIES**  
Flow up to 3 mc/h  
Head up to 12 bar  
NPSH up to 0,5 m



**T ECO MAG-M SERIES**  
Flow up to 1,5 mc/h  
Head up to 85 m



**V IN LINE SERIES**  
Flow up to 3 mc/h  
Head up to 14 bar



**VANEMAG SERIES**  
Flow up to 3 mc/h  
Head up to 14 bar



**MHV MAG-M SERIES**  
Flow up to 45 mc/h  
Head up to 8 bar



**V MODULAR SERIES**  
Flow up to 2 mc/h  
Head up to 48 bar



**SC MAG-M SERIES**  
Flow up to 35 mc/h  
Head up to 360 m  
NPSH up to 0,5 m



**GS MAG-M SERIES**  
Volumetric gear  
Mag-Drive pumps  
Flow up to 80 mc/h  
Head up to 30 bar



**CN MAG-MV SERIES**  
Centrifugal Vertical  
in line Mag-Drive pumps  
Flow up to 1800 mc/h  
Head up to 95 m



**CNV MAG-M SERIES**  
Centrifugal Vertical  
Mag-Drive pumps  
Flow up to 500 mc/h  
Head up to 120 m  
Length up to 7 m

## NON METALLIC PUMPS



**CL MAG-M SERIES**  
Acc. to DIN 22858  
CC and BF version  
Flow up to 480 mc/h  
Head up to 80 m



**CMP ARMORED SERIES**  
Acc. to DIN EN 22858  
Flow up to 75 mc/h  
Head up to 60 m



**C MAG-PL SERIES**  
Acc. to DIN EN 22858  
Flow up to 140 mc/h  
Head up to 44 m



**C MAG-P SERIES**  
Acc. to DIN EN 22858  
Flow up to 140 mc/h  
Head up to 44 m



**CSP MAG-P SERIES**  
Flow up to 70 mc/h  
Head up to 32 m  
Self-Priming up to 4 m



**CM MAG-P SERIES**  
Flow up to 35 mc/h  
Head up to 23 m



**TSP MAG-P SERIES**  
Flow up to 12 mc/h  
Head up to 50 m  
Self-Priming up to 5 m



**T MAG-MP SERIES**  
Flow up to 13 mc/h  
Head up to 53 m



**T MAG-P SERIES**  
Flow up to 13 mc/h  
Head up to 53 m



**VP SERIES**  
Flow up to 3 mc/h  
Head up to 5 bar



**CMV MAG-P SERIES**  
Centrifugal Vertical  
Mag-Drive pumps  
Flow up to 30 mc/h  
Head up to 44 m  
Length up to 0,5 m



**CV MAG-P SERIES**  
Centrifugal Vertical  
Mag-Drive pumps  
Flow up to 140 mc/h  
Head up to 44 m  
Length up to 5 m

Standard pump models are available from stock or in a very short lead time